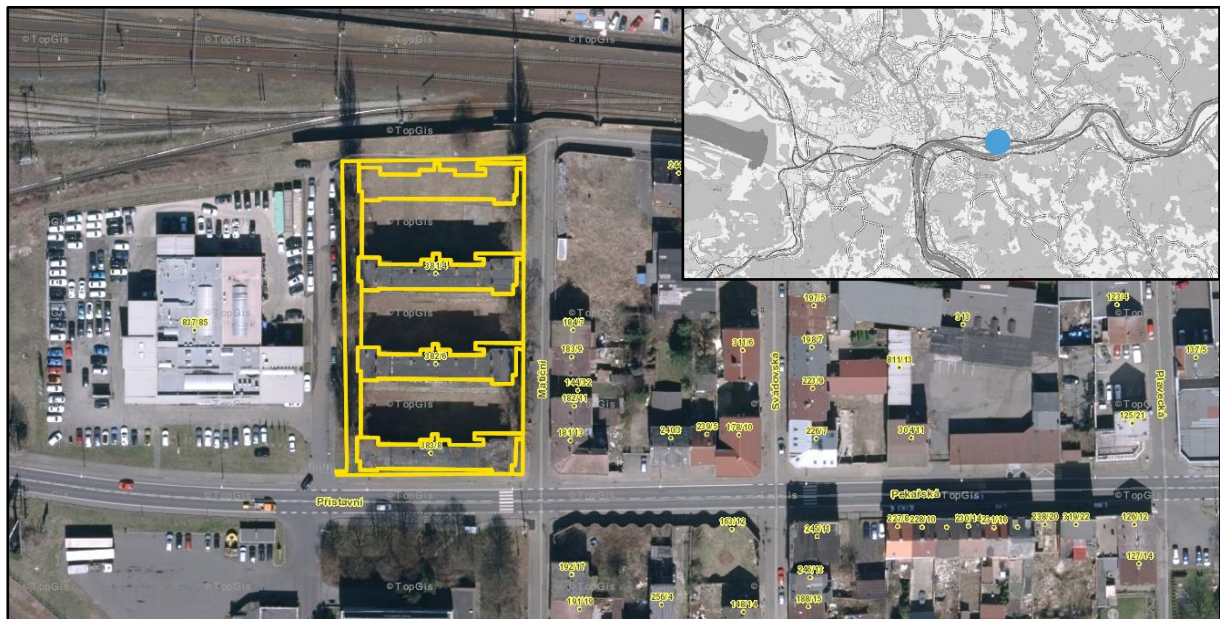


# BROWNFIELDS

## Matiční – balcony access houses



Description		Ownership	
Municipality	Ústí nad Labem	Owner	The city
Cadastral territory	Krásné Březno	Number of owners	1
Street	Matiční		

### Basic information

Three not maintained balcony access houses, glassless windows, poor technical condition.

### Photographs





## Detailed information

Identification number	26
Use according to the zoning plan	housing in residential buildings
Former use	housing
Public technical infrastructure	complete
Number of plots	10
Total area	0,474 ha

## Accessibility

The city centre	3,3 km
The slip road onto the D8 motorway	6,6 km
The Capital City Prague	84 km
The City of Dresden	68 km